

USER MANUAL

**Roll to roll system  
for EPSON printers**




*Please keep the original packaging in case you need to return the unit.  
If we receive the system in non-original packaging, the warranty may be void.*

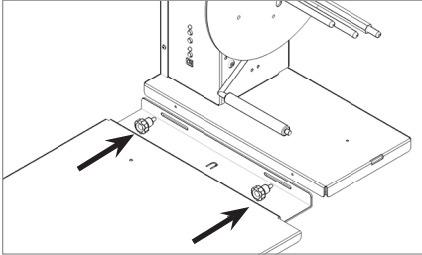
## **APPLICATION**

Those units are used to rewind/unwind the labels coming from the input or output of Epson color label printer onto an adjustable core holder from 40mm (1.57") up to 118mm (4.64") or onto the 76mm (3") fixed core holder. The maximum label roll diameter is 250mm (9.84") while the maximum label width is 127mm (5").

## **POWER SUPPLY**

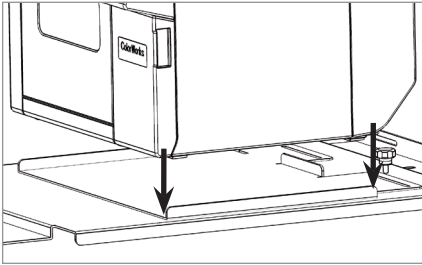
An external power supply 100/240VAC - 2.5A at 24V  allows an electronic circuit to provide, through the tension arm, the speed and sense of rotation auto adjustment.

## **INSTALLATION**



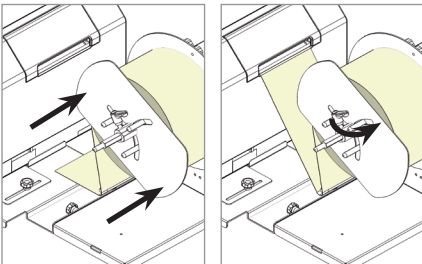
### **STEP 1 - Label unwinder**

Attach the printer plate to the unwinder (U).  
Do not fasten the knobs for the moment.



### **STEP 2**

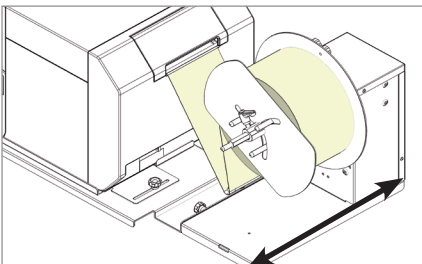
Place the printer on the plate using the guide.



### **STEP 3**

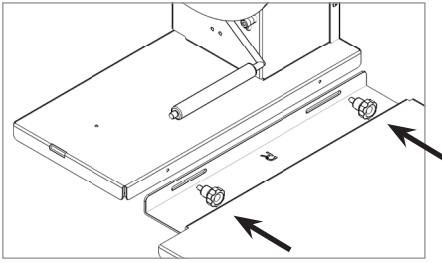
Load both roll of media and outer disk onto the core holder. Keeping the media underneath the tension arm, turn on the unwinder and feed the media into the printer.

*Please look at printer's user manual and follow the detailed procedure on how to load the media into the printer.*



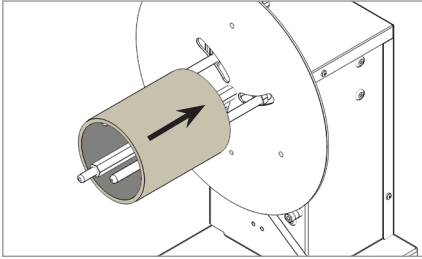
### **STEP 4**

Once the media is loaded into the printer, slide left and right the unwinder to find the correct alignment between the two units and tighten the knobs.



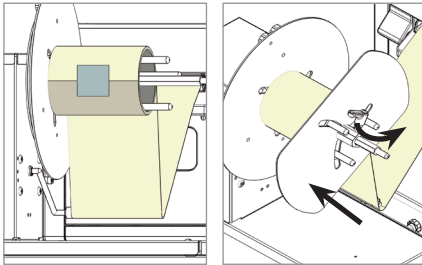
### ***STEP 5 - Label rewinder***

Attach the rewinder to the printer plate.  
Do not fasten the knobs for the moment.



### ***STEP 6***

Load the empty cardboard core onto the core holder.



### ***STEP 7***

Keeping the printed media underneath the tension arm, stick the end on the cardboard core. Load the outside disk making sure it adheres to the media.

Once the media is loaded on the rewinder, slide left and right the rewinder to find the correct alignment between the two units and tighten the knobs.

## **WORKING CONDITIONS**

### ***Label Unwinder:***

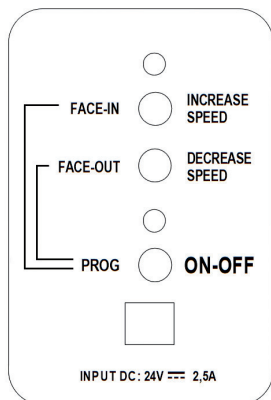
- When the printer forwards the media for printing, the tension arm goes up, the device unwinds the media. Yellow or green led on depending on the selected rewinding mode (face-in or face-out).
- When the tension arm is in the middle position, the device is idle. Both yellow and green leds on.
- When the printer backwards the media, the tension arm goes down, the device rewinds it. Yellow or green led on depending on the selected rewinding mode (face-in or face-out).

### ***Label Rewinder:***

- When the printer forwards the media for printing, the tension arm goes down, the device rewinds the media. Yellow or green led on depending on the selected rewinding mode (face-in or face-out).
- When the tension arm is in the middle position, the device is idle. Both yellow and green leds on.
- When the printer backwards the media, the tension arm goes up, the device unwinds it. Yellow or green led on depending on the selected rewinding mode (face-in or face-out).

When the unit is operating but the media is not loaded or it runs out, the tension arm reaches the lowest position and after few seconds the unit will stop by itself, both leds blink and it beeps.

## CONTROL PANEL



### **ON-OFF**

Push this button to turn On or Off the unit.

### **INCREASE SPEED**

Push this button to increase the rotation speed.

### **DECREASE SPEED**

Push this button to decrease the rotation speed.

### **LABEL FACE-OUT**

Turn the unit off. Keep pushed "FACE OUT" button, push and release "ON-OFF" button while the green led turns on and off. The unit is now ready to operate.

### **LABEL FACE-IN**

Turn the unit off. Keep pushed "FACE IN" button, push and release "ON-OFF" button while the yellow led turns on and off. The unit is now ready to operate.

## SMART SOLUTIONS FOR THE LABELING INDUSTRY

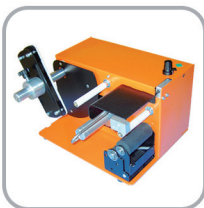
Label rewinder, label unwinder, electronic label dispenser and more...



MATRIX REMOVER AND SLITTER



LONGITUDINAL LABEL SLITTER



EASY LABEL DISPENSER



ELECTRONIC LABEL DISPENSER



SCORPIO SERIES:  
DIGITAL LABEL FINISHING SYSTEMS



GEMINI:  
DIGITAL DIE CUTTER FOR SHEETS



VIRGO:  
DESKTOP DIGITAL FINISHING SYSTEM



MOTORIZED CORE HOLDER  
UNWINDER/REWINDER

- FOR MORE INFO CONTACT YOUR RESELLER -