

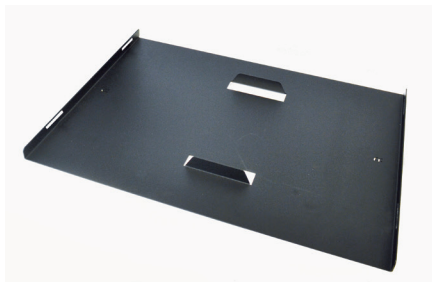
USER MANUAL

Longitudinal Label Slitter
for EPSON C831

THIS PRODUCT IS CERTIFIED:



INSTALLATION



STEP 1

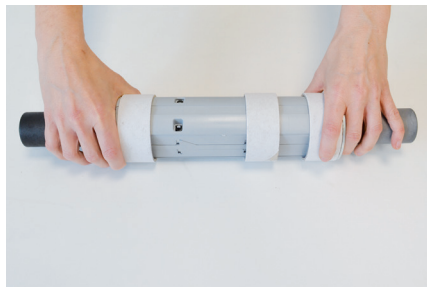
Assemble the printer plate.



STEP 2

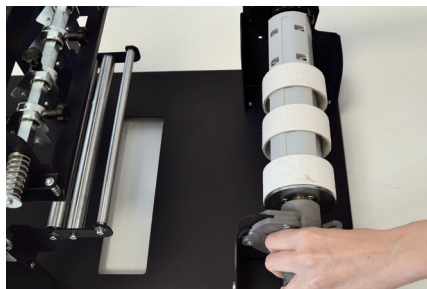
Connect the slitter to the printer plate.

Label Unwinder
(optional)



STEP 3

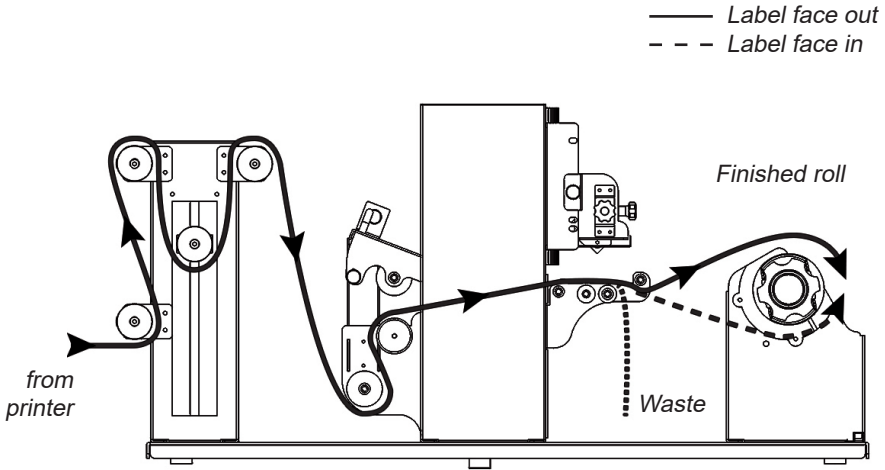
Load the cardboard cores onto the core holder.



STEP 4

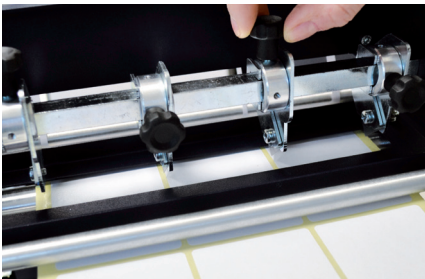
Place the core holder in position. The grey handle must match with the grey holder.

Paper Path



STEP 5

Attach the labels to the cores.
This will provide the necessary tension
in order to start the slitting process.

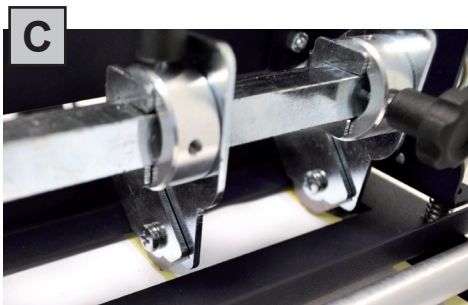
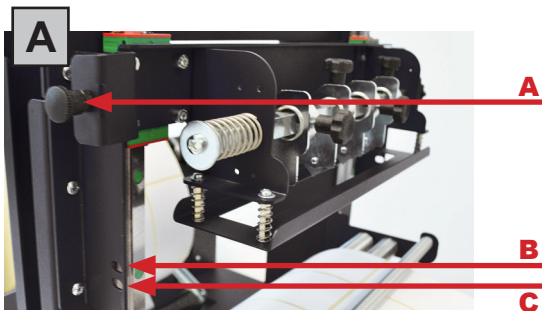


STEP 6

Align the blades with the edges and the
center of the labels, tighten the thumb
screw once the blade is in position.
You can alternate the position of the
thumb screws for easier access.

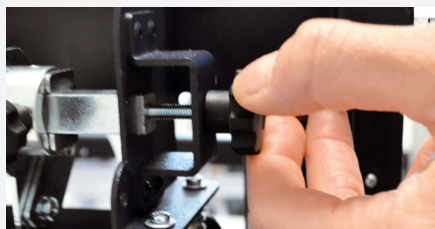


WARNING: The slitter blades are exposed and are **VERY** sharp when the slitter station is in the “up” position. Use extreme caution!

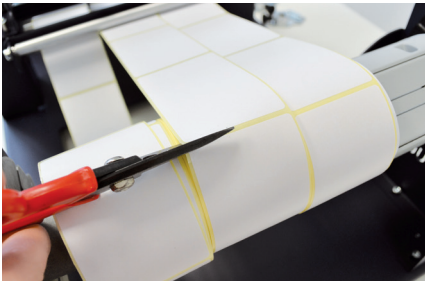


Slitter module has 3 positions:

- Upper position (A), the blades are closed to allow the media loading;
- Middle position (B), align the blades with the edges and the center of the labels, tighten the thumb screw once the blade is in position;
- Lower position (C), the blade cut the media.



The black knobs lock the slitter module in the requested position.
Screw the thumb knobs to move the blades to the right or to the left.



STEP 7

Switch on the Slitter.

Slowly turn the speed knob. Run the slitter until the labels reach the bottom of the take-up core holder.

Remove the labels that have rewinded onto the take-up core holder.



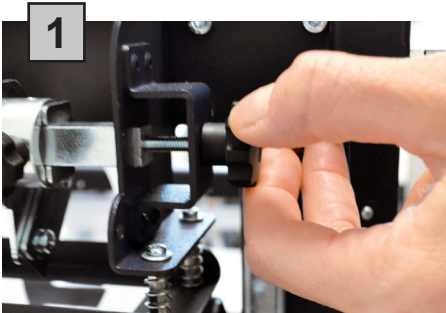
STEP 8

Attach the labels to the core using a waste label or tape.

Switch on the slitter and slowly turn to increase the speed.

Now you can start to print.

HOW TO ADD OR REMOVE A BLADE HOLDER

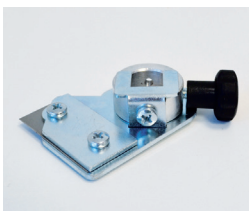


Keep out the iron slide bar unscrewing the thumb screw.



Slide in or out the blade holder. Relocate the slide iron bar in its position and rescrew the thumb screw.

REPLACING SLITTER BLADES

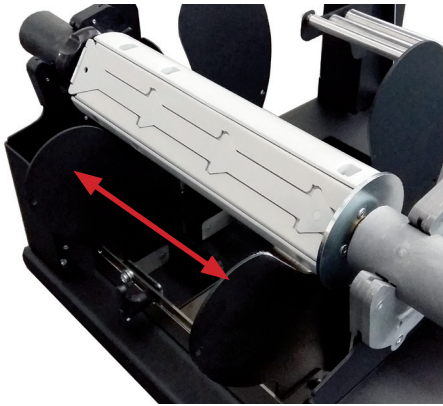


Loosen the two screws holding the blade in place.

Replace the blade.

Fix back the screw to holding the blade in place.

REWINDER GUIDES ALIGNMENT



Metal glides adjustable to obtain rolls of labels perfectly aligned.

ULTRASONIC SENSOR CALIBRATION



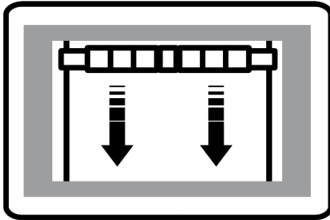
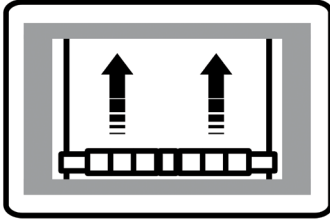
WARNING: Before proceeding with the ultrasonic sensor calibration, turn “OFF” the module that needs to be calibrated (laminating or matrix removing).

1. Take a paper clip and insert it into the little hole located next to the OFF-ON switch and push it down for 5 seconds. The yellow led will light up.
2. Raise the tension arm. The yellow led will stay on.
3. Once again, insert the paper clip down into the hole for 5 seconds. The led will light off.

Ultrasonic sensor calibration complete.

MATRIX REMOVER & SLITTER MODULE

ULTRASONIC TENSION CONTROLLER

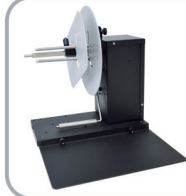


WARNING: If what (pictured above) is not happening, please press the button on circuit board until the yellow led flashes. After it flashes for 5 times release the button and perform a new test.

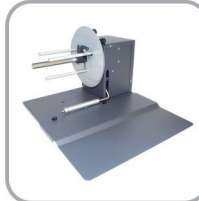
SMART SOLUTIONS FOR THE LABELING INDUSTRY

Label rewinder, label unwinder, electronic label dispenser and more...

OTHER
PRODUCTS



LABEL UNWINDER/REWINDER



SMALL LABEL
UNWINDER/REWINDER



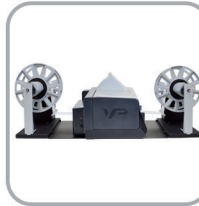
LABEL COUNTER



ROLL TO ROLL SYSTEM
FOR LABEL PRINTERS



ROLL TO ROLL SYSTEM
FOR EPSON PRINTERS



ROLL TO ROLL SYSTEM
FOR VipCOLOR VP SERIES



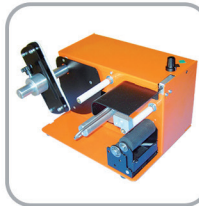
ROLL TO ROLL SYSTEM
FOR PRIMERA LX SERIES



MATRIX REMOVER AND SLITTER



LONGITUDINAL LABEL SLITTER



EASY LABEL DISPENSER



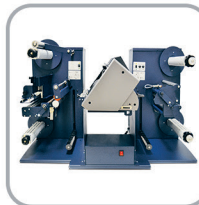
ELECTRONIC
LABEL DISPENSER



SCORPIO SERIES:
DIGITAL LABEL FINISHING SYSTEMS



GEMINI:
DIGITAL DIE CUTTER FOR SHEETS



VIRGO:
DESKTOP DIGITAL FINISHING SYSTEM



MOTORIZED CORE HOLDER
UNWINDER/REWINDER

- FOR MORE INFO CONTACT YOUR RESELLER -